



Digital Leader

4 November 2019

Julie Snell

CEO

Bristol is Open

Peter Anderson

Head of Connected City Service

Bristol City Council



City of two stories

Some of the Key challenges the City came together to address



Bristol has the first local authority large-scale wind turbine & commitment to city-scale low carbon, Smart Energy Infrastructure programme.



Bristol is 3rd most congested city in UK



November 2018 Bristol was one of the First UK Cities to declare Climate Emergency

Pollution increase in health problems, 40,000 UK deaths p/a



Here 80% of the children go onto higher education



Here Less than 5% of the children go onto higher education

- Better off Bristol
- Middle income Bristol
- Less well off Bristol



Bristol has seen a growth of 50% of those 85+ over 10yrs



In Bristol 50% of people who use Social Care services are aged 75 + & Living in isolation is increasing

Local councils to see central funding fall 77% by 2020



Less Government expenditure: We need smarter ways of working

Bristol is on a journey...



- Early 2010s Bristol took the challenge to become Smart & Green
- Developed Smart City approach on:
 - Smart Operation Centre, Smart Transport, Smart Data
- Delivered suite of smart city initiatives... the awards followed
 - Bristol Operation Centre
 - Bristol is Open
 - Bristol Energy
 - Bristol Waste
- Demonstrates Bristol's ability to turn ideas into reality
 - Strategy > R&D > Scale > Delivery
 - Evolution and lessons learnt from experimentation



In 2050, Bristol is a fair, healthy and sustainable city.

A city of hope and aspiration, where everyone can share in its success.

Connectivity

By 2050 everyone will be well-connected with digital services and transport that is efficient, sustainable and inclusive; supporting vibrant local neighbourhoods and a thriving city centre

Transport is healthy, active, sustainable, safe and enables easy movement throughout the city

The city is well connected, supporting access to employment, education and services for all

World class urban communication infrastructure and services underpin all we

Economy

By 2050 everyone in Bristol will contribute to a sustainable, inclusive and growing economy from which all will benefit

- Tackle persistent worklessness and economic exclusion
- Economic growth through boosting productivity
- Improved integration between neighbourhoods and employers.

Environment

By 2050 Bristol will be a sustainable city, with low impact on our planet and a healthy environment for all

- Bristol will be a carbon neutral city
- Everyone will have access to healthy, ethical and sustainably produced food
- Bristol will have an abundance of wildlife, all people will benefit from healthy natural environment.

Health and Wellbeing

By 2050 everyone in Bristol will have the opportunity to live a life in which they are mentally and physically healthy

- Mental health will be as important as physical health in Bristol
- Health inequalities will be reduced
- Children will grow up free of adverse childhood experiences having had the best start in life and support through their life.

Homes and Communities

By 2050 everyone in Bristol will live in a home that meets their needs within a thriving and safe community

- Every person in Bristol will be able to live in a home that they can afford and which is secure and warm
- Bristol is a safe city for all citizens and provides a safe environment for future generations
- Everyone can play their part in powerful, connected, inclusive neighbourhoods with access to the things needed for a good life.

Learning and Skills

By 2050 everyone in Bristol will have the best start in life, gaining the support and skills they need to thrive and prosper in adulthood

- School engagement and attendance has improved and has the development of people's life skills
- Improved support for children with Special Educational Needs and Looked After Children
- Improved post 16 offer developed with clear employment and skills pathways.



How Bristol Collaborated to develop a city strategy for all

BRISTOL
ONE CITY

EUROPEAN CAPITAL OF INNOVATION AWARDS

#iCapitalAwards



European
Commission



<https://www.bristolonecity.com/one-city-plan/>



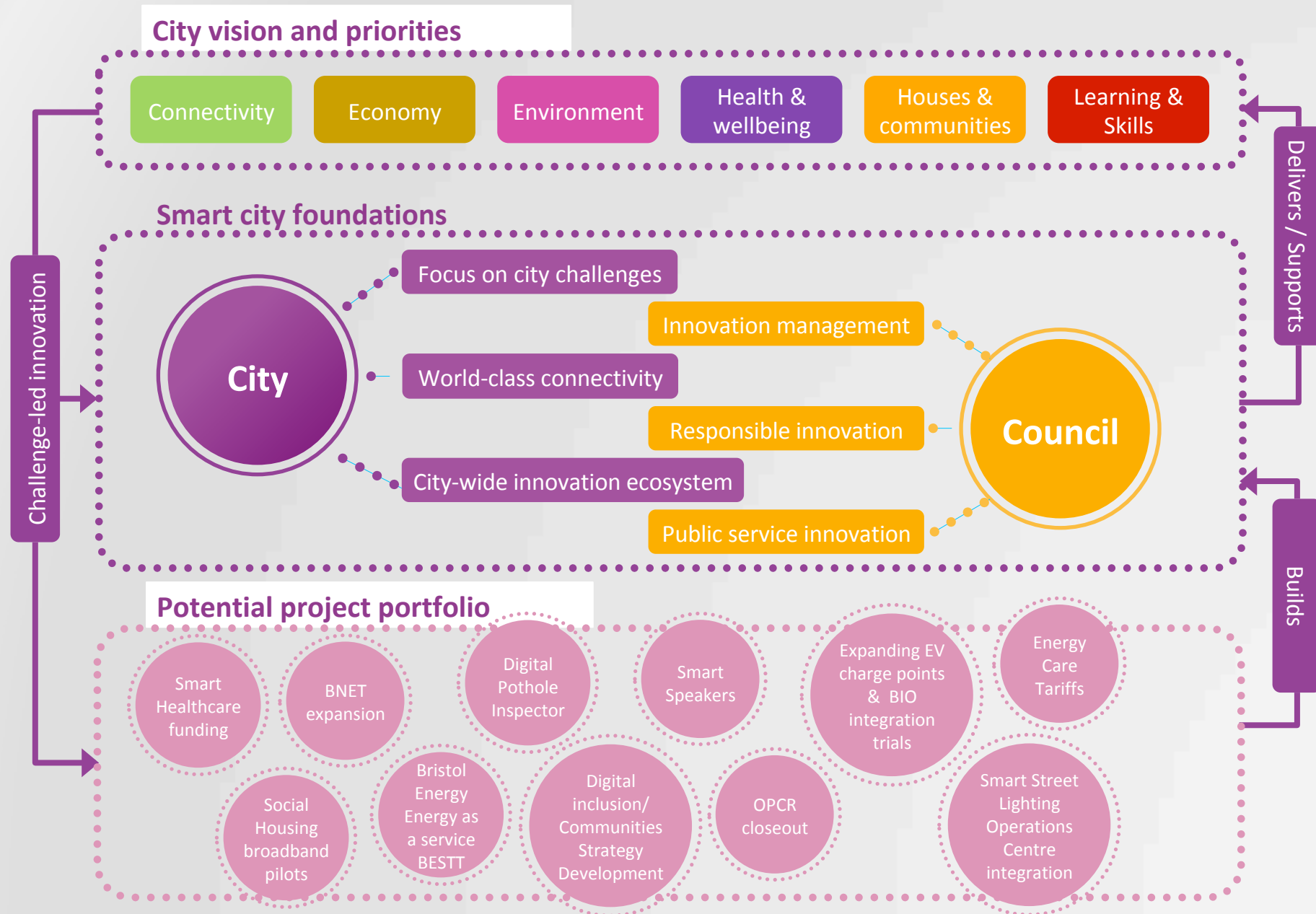
Connecting Bristol

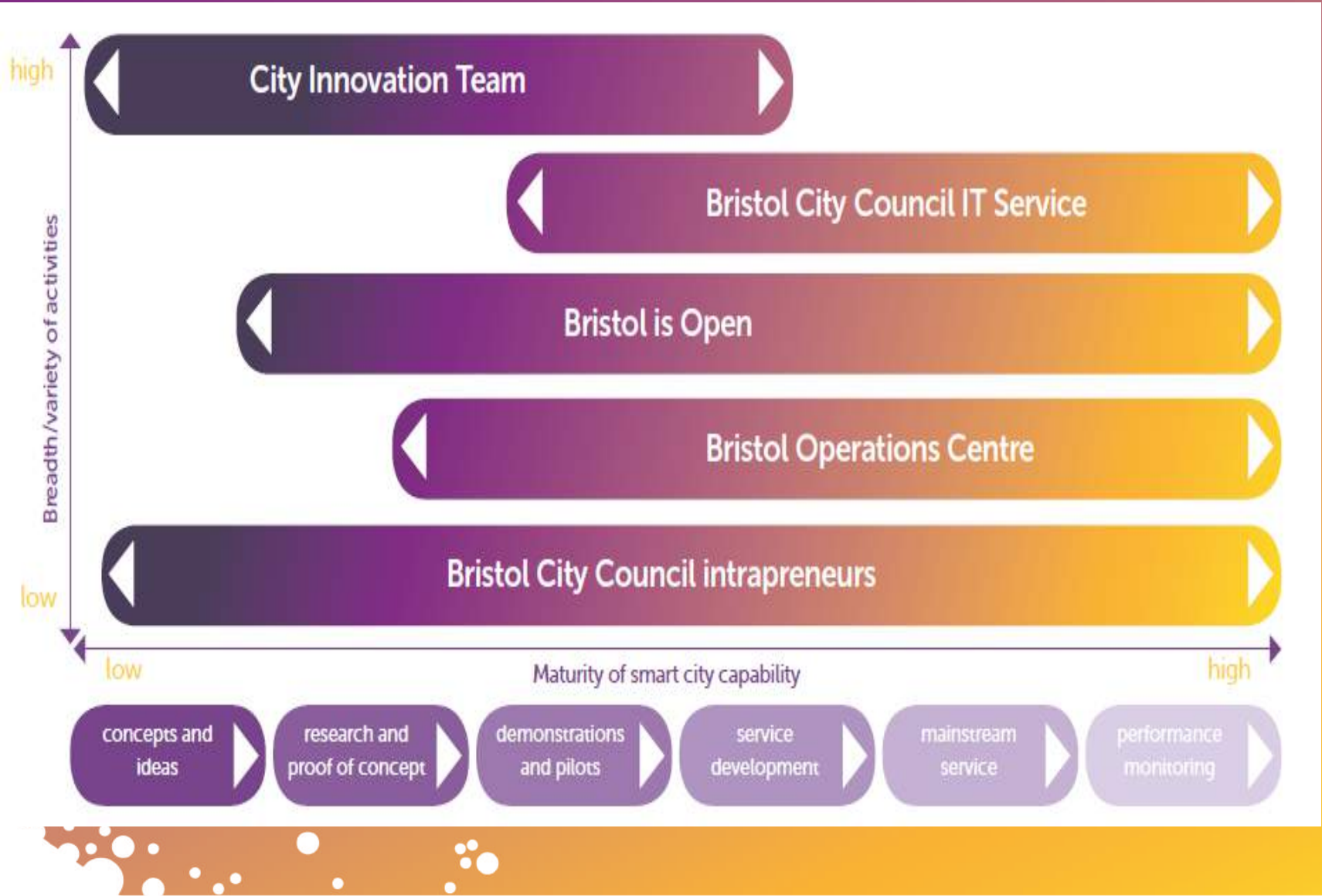
Laying the foundations for a smart, well-connected future

BRISTOL
CONNECTED CITY

<https://www.connectingbristol.org/strategy/>

Connecting Bristol on a page





B-NET, what is it ?

- Bristol City Council Network = B-NET
- Minimum of 115km Duct & Fibre Infrastructure across the city
- Purchased Redeffussion network, at least 75km of unused & unproven duct
- Linked with Bristol University Network
- Third biggest duct network in the city

Opportunities for investment & connectivity, enabled further in BNET new duct sections delivered under our 'dig once' policy

BRISTOL
CONNECTED CITY



What B-NET does for the City....

- What is connected to BNET
 - Essential Services
 - CCTV
 - Traffic signals / Management
 - Operations Centre
 - Own Public Digital Service





Case Study

Driven by our need to save lives

A decorative graphic consisting of numerous white dots of varying sizes, arranged in a curved, wave-like pattern that flows from the left side of the slide towards the center.

BRISTOL
CONNECTED CITY



2018 the West of England Combined Authority secured £5 million from government to trial a superfast 5G network at tourist destinations in Bristol and Bath.

5G Smart Tourism project looked at new 5G technology and infrastructure in the West of England

Region of Collaboration



5G Tourism Visitor Safety - Objectives

- Provide improved visitor Safety Concepts
- Built in Harbour side
- Monitored out of Operation Centre
- Migrate to a live Event
- Provide some demonstrations
- Leave a operational legacy that could be developed
- Help reduce; Rescue call out cost; estimate £90K (Andy Goode: Fire Chief)



Recent spate of incidents





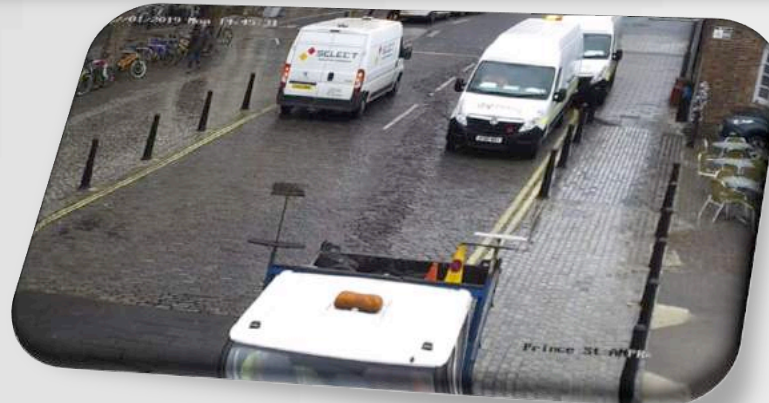
5G Tourism Safety & Security Outputs

Waterside Safety





5G Tourism Safety & Security Outputs Vehicle Detection



5G Tourism Event Control



Sited With Harbour Festival Event control

Wirelessly Connected

Providing:

- Telephone
- WiFi
- Camera Visualization
- Crowd Analysis
- Marshal Tracking



Watch this space: we are still developing and refining the business case to look at the option to scale this solution to support a safer and better Bristol Visitor experience



Thank you for joining us today

Julie Snell

Julie.snell@bristolisopen.com

Pete Anderson

Pete.anderson@Bristol.gov.uk